

# REdUSE

---

## UNDER PRESSURE

### How our material consumption threatens the planet's water resources

**Stephan Lutter**

SERI – Sustainable Europe Research Institute, Vienna – Austria

Responsible or irresponsible, November 8, 2011

SUSTAINABLE EUROPE  
RESEARCH INSTITUTE

SERI



[www.seri.at](http://www.seri.at)

BECAUSE IT MATTERS!



# REdUSE - REducing Resource Use for a Sustainable Europe

is a 3-year action within the EuropeAid strategy “Public awareness and education for development in Europe”.

aims at highlighting the global impacts of Europe’s growing resource use,

focusing on imported resources from developing countries and its consequences in the global south,

done by Friends of the Earth and SERI





# UNDER PRESSURE

How our material consumption threatens the planet's water resources





## UNDER PRESSURE...

looks at trends of material and water consumption and how they are interrelated;

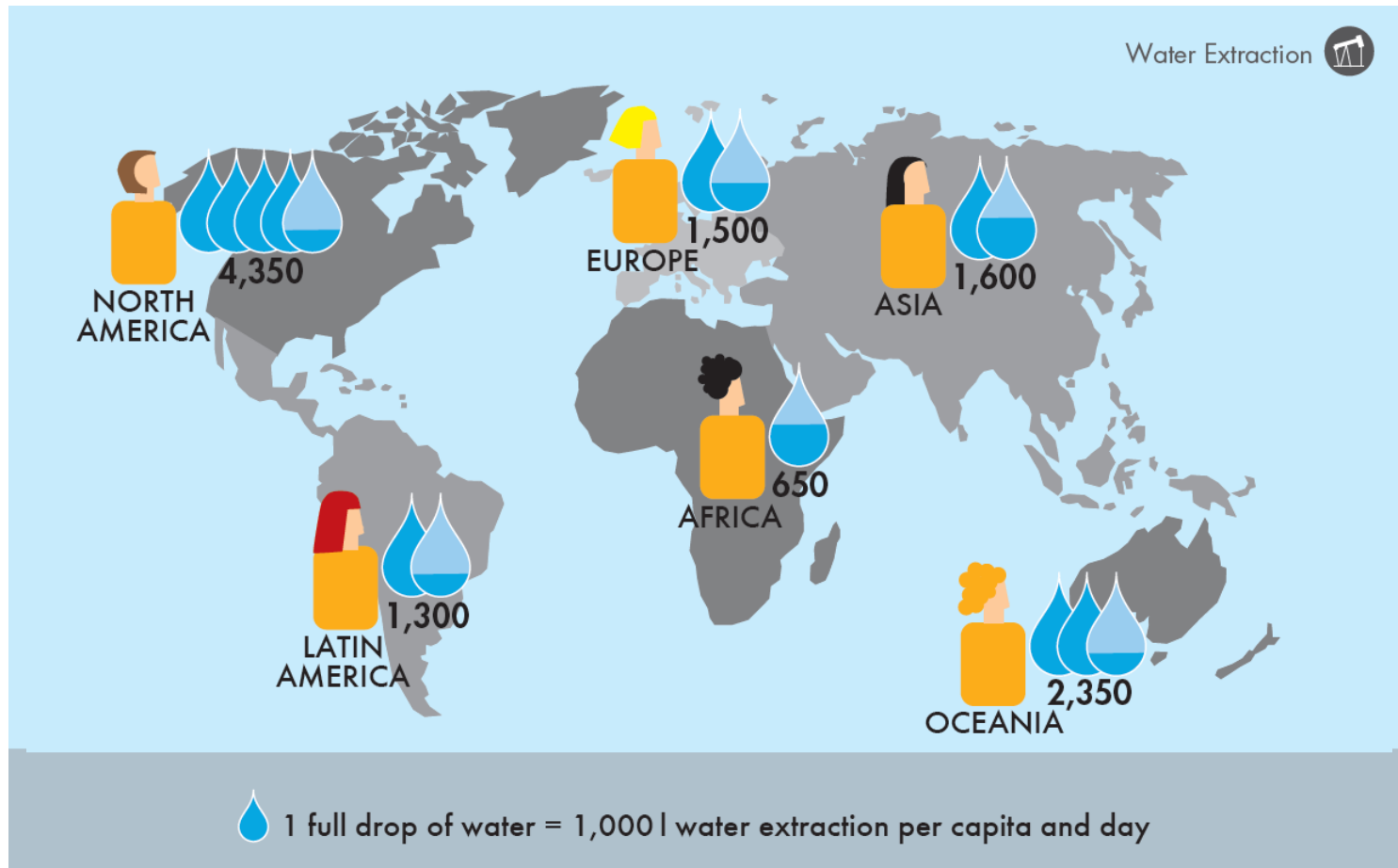
shows that there are vast regional differences in material and water extraction & consumption;

illustrates how Europe's material and water consumption is impacting others;

gives examples on cotton (Togo, Cameroon), aluminium (Brazil) and Lithium (Chile);

suggests a way forward towards sustainable resource consumption.

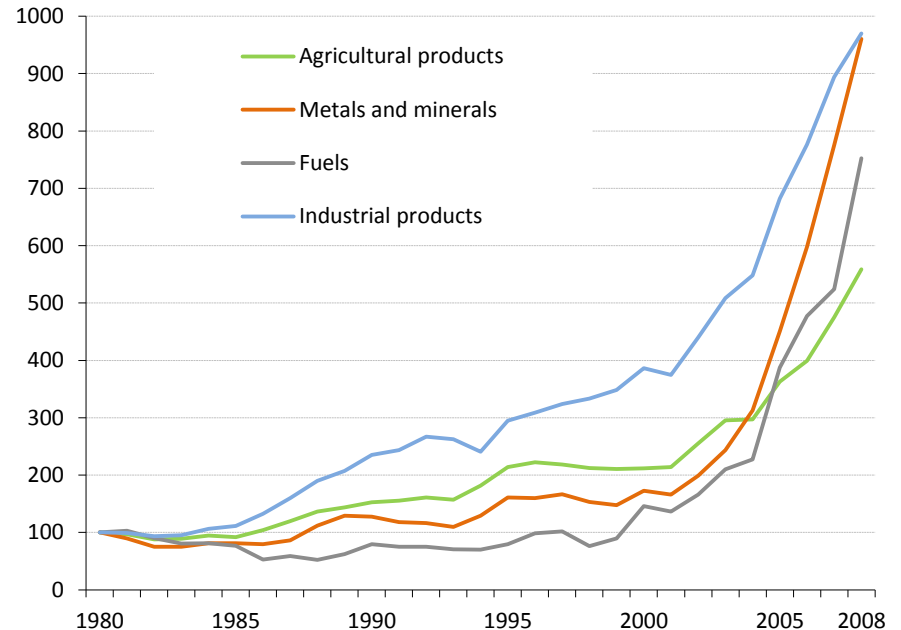
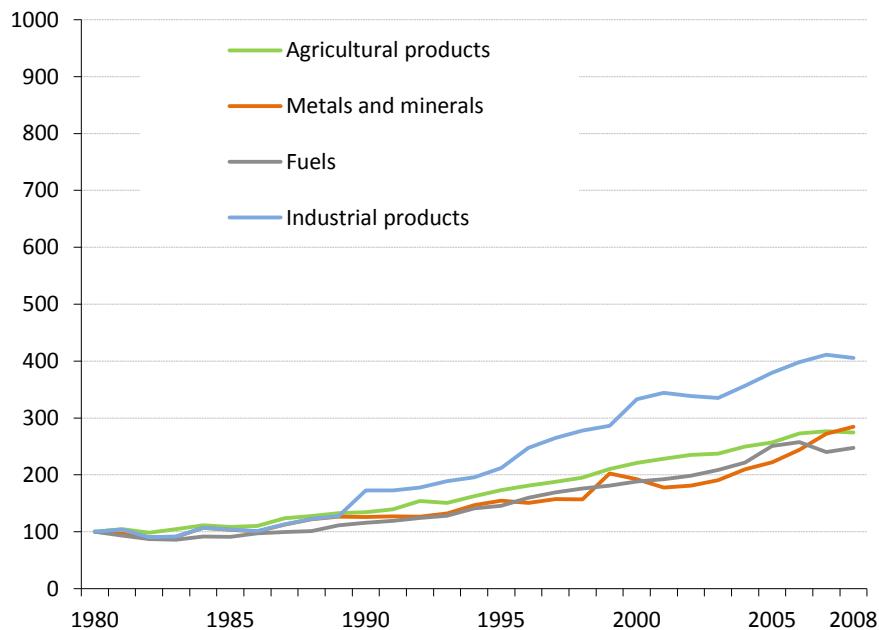
There are wide differences in per capita extraction between the different continents.





# Resource Trade

The volume of global trade has dramatically increased in recent decades.

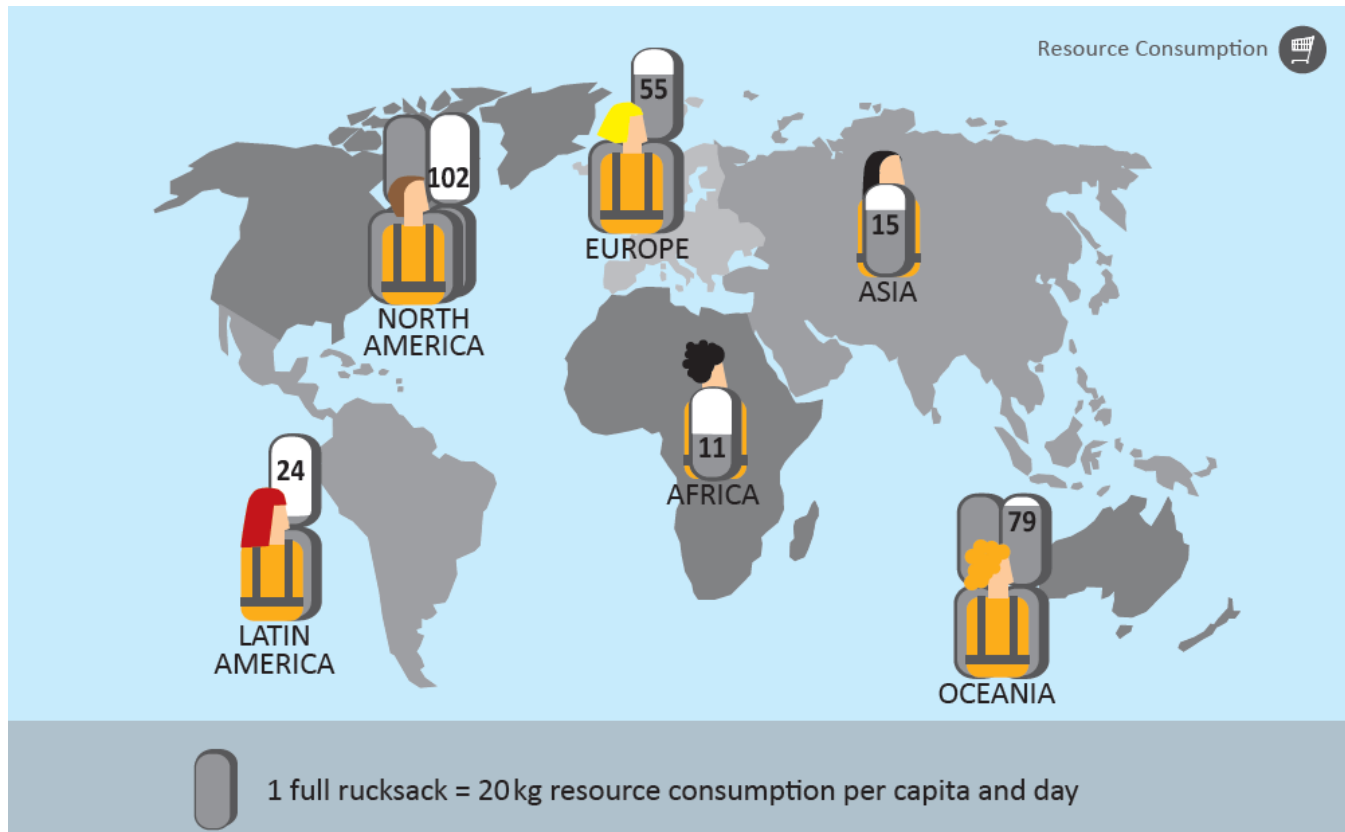


Source: Dittrich, 2011

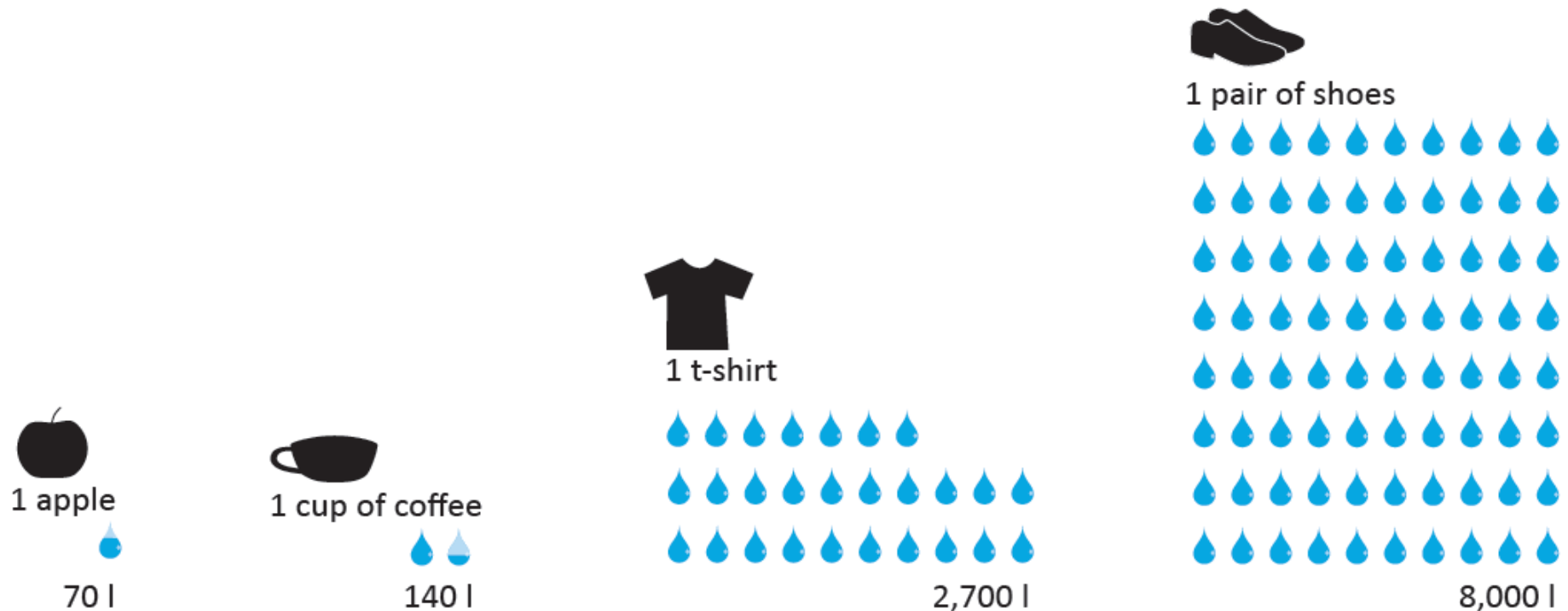


# Resource Consumption

Material consumption is unequally distributed between different sectors as well as between world regions.

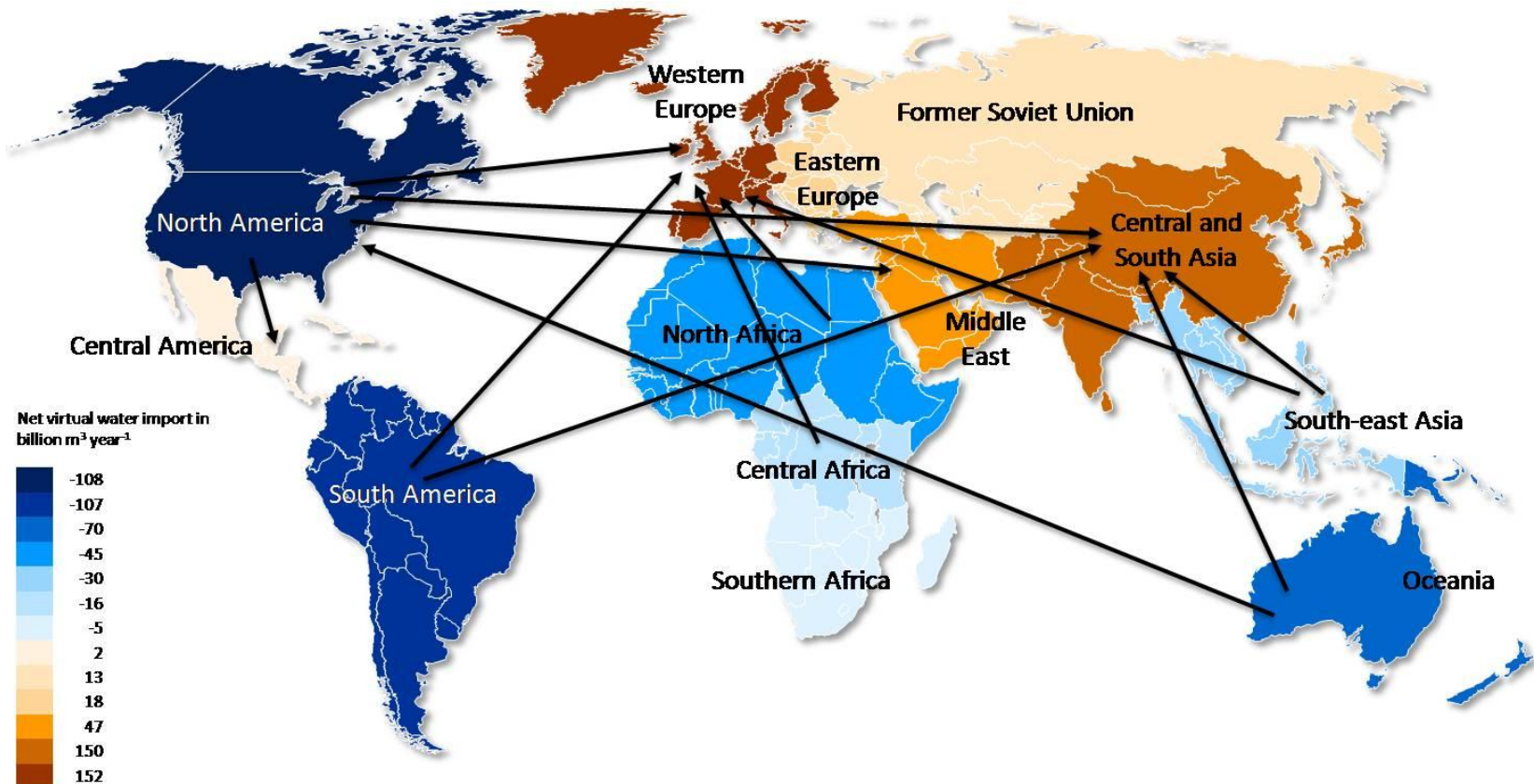


The volume of global trade of “virtual water” has dramatically increased as well.

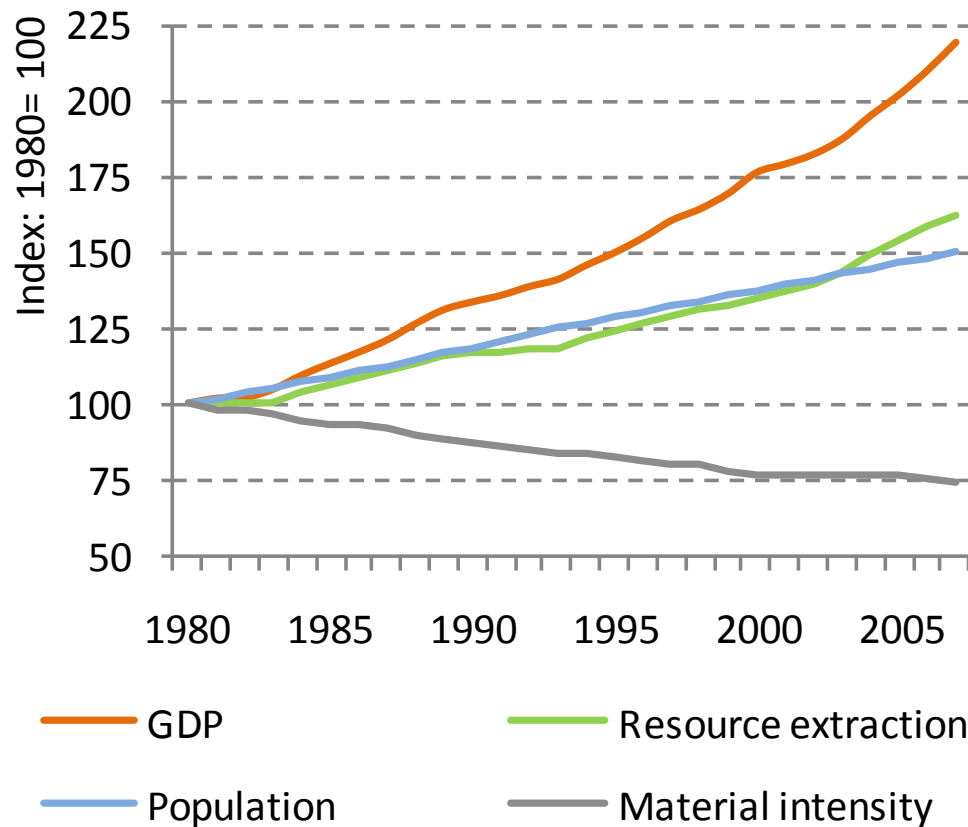




The volume of global trade of “virtual water” has dramatically increased as well.



It is essential that we start using less resources more efficiently.





## Meeting the challenge

Europe's current model of economic growth is linked to high levels of continuous consumption and therefore high levels of resource use.

Decreasing our levels of resource use in absolute terms is not only an environmental necessity, it is also an economic opportunity.

A global perspective is needed to ensure that policy solutions are credible.

Designing a policy framework that incorporates the interconnected nature of resources

Take a comprehensive view: materials, water, land, green house gas emissions

**Thank you for your attention!**

**[www.seri.at](http://www.seri.at)**

**[www.reduse.org](http://www.reduse.org)**

contact: [stephan.lutter@seri.at](mailto:stephan.lutter@seri.at)



**SUSTAINABLE EUROPE  
RESEARCH INSTITUTE**



**BECAUSE IT MATTERS!**  
[www.seri.at](http://www.seri.at)