



Interface **FLOR**

Full product transparency delivers resource efficiency



Mission Zero:

*our promise to eliminate
any negative impact our company
may have on the environment
by the year 2020.*

*Interface***FLOR**

Our Results so far (Dec 2010)

- **82%** reduction in waste sent to landfill since 1996 per unit of production
- Water intake in manufacturing is down **82%** since 1996 per unit of production
- Total energy use down by **43%** since 1996 per unit of production
- Non-renewable energy is down by **60%** since 1996 per unit of production
- Absolute reduction of Interface GHG emissions by **35%** from baseline
- **30%** of global energy is from renewable sources
- **40%** of total raw materials are recycled or bio-based materials
- Cumulative avoided waste costs totalling **\$438** million since 1994
- All factories in Europe operate on **100%** renewable electricity
- **99%** of the products sold in Europe were manufactured in Europe

*Interface***FLOR**

The 2 paradigm shift



OLD

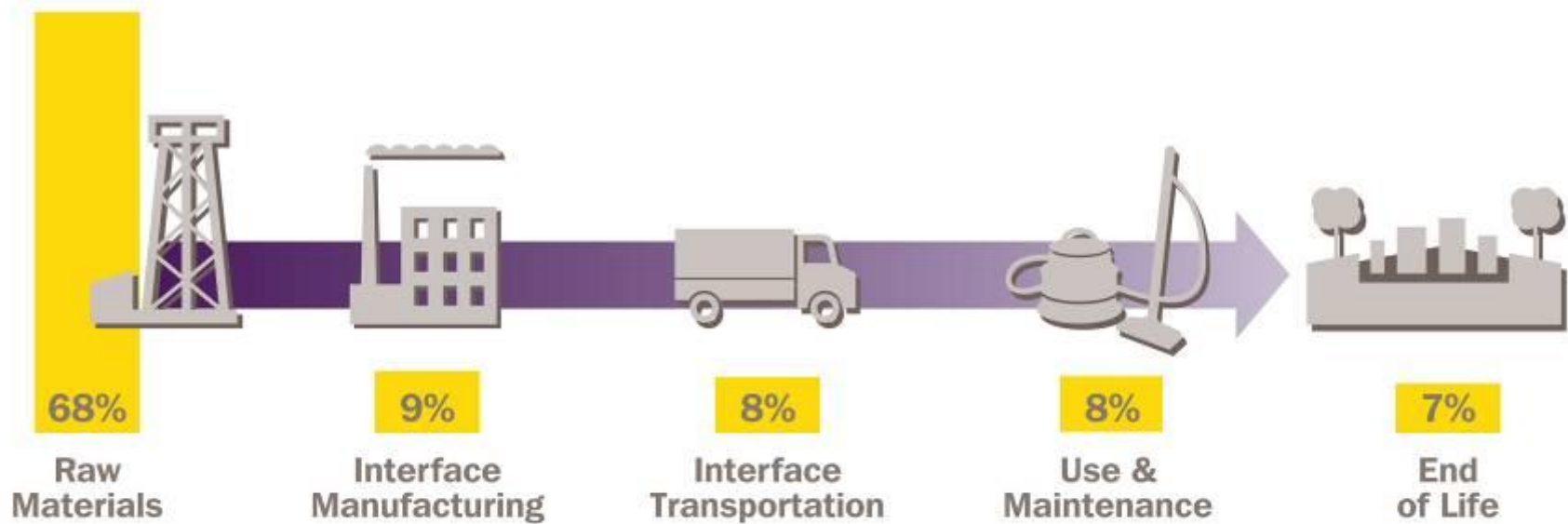
- Corporate sustainability
- The Beauty contest
- Awards, labels, csr reports, certifications

UPCOMING

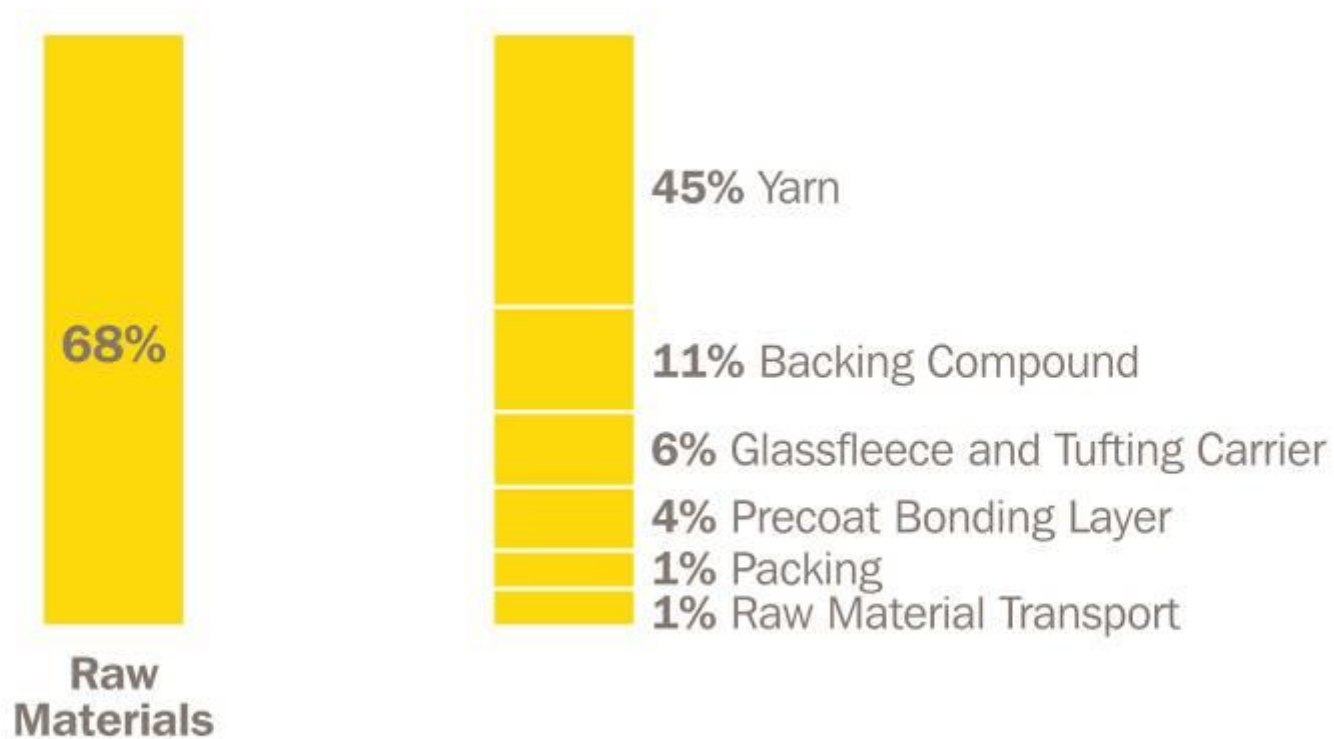
- Product sustainability
- Embedded
- LCA performance
- kg CO2 / m2

RADICAL

- Systems sustainability
- Radical system thinking
- Close loop systems, radical materials
- Services



Life Cycle Analysis. The key in sustainability.




Life Cycle Analysis. The key in sustainability.

What can we do
to reduce the
impact of yarn?



- Reduce the amount of yarn used
- Use more recycled yarn in the composition
- Invent a new yarn

*Interface*FLOR

A close-up photograph of a textile loom. The image shows the intricate mechanism of the loom, including the heddles and the weaving process. A piece of fabric with a diagonal striped pattern in shades of brown and tan is being woven. The background is dark and out of focus, emphasizing the mechanical details and the texture of the fabric.

Less is more. 50% less yarn.

*Interface***FLOR**

Scavenge fishing nets to recycle nylon



kg CO₂ eq. - Raw materials & Production

25.00

20.00

15.00

10.00

5.00

0.00

Yarn

Other

Visions
(product from 1996)

Yarn

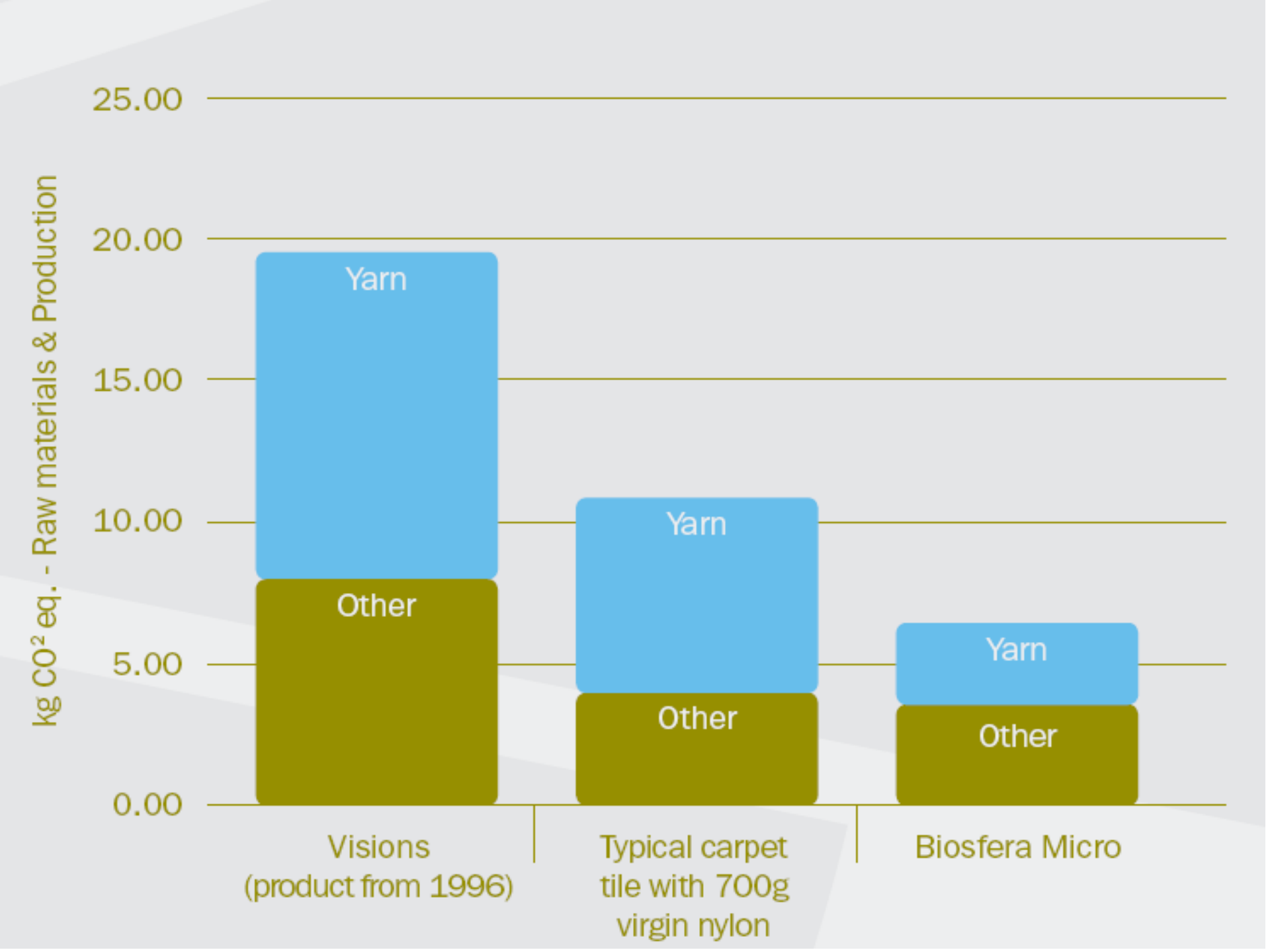
Other

Typical carpet
tile with 700g
virgin nylon

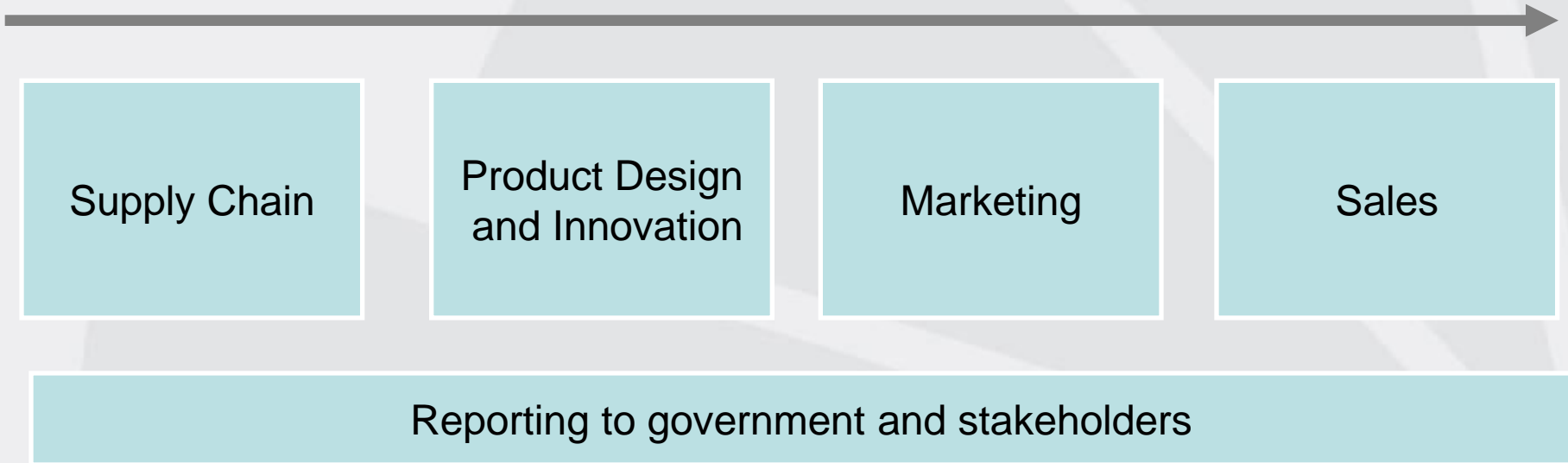
Yarn

Other

Biosfera Micro



LCA brings alignment to the whole company



What you tell to your suppliers is the same that what you tell to your customers.

What your designers focus on is the same your sales force talk about.

What you report to stakeholders is the same that what your marketing claims.

It's all base on just the facts from LCA.

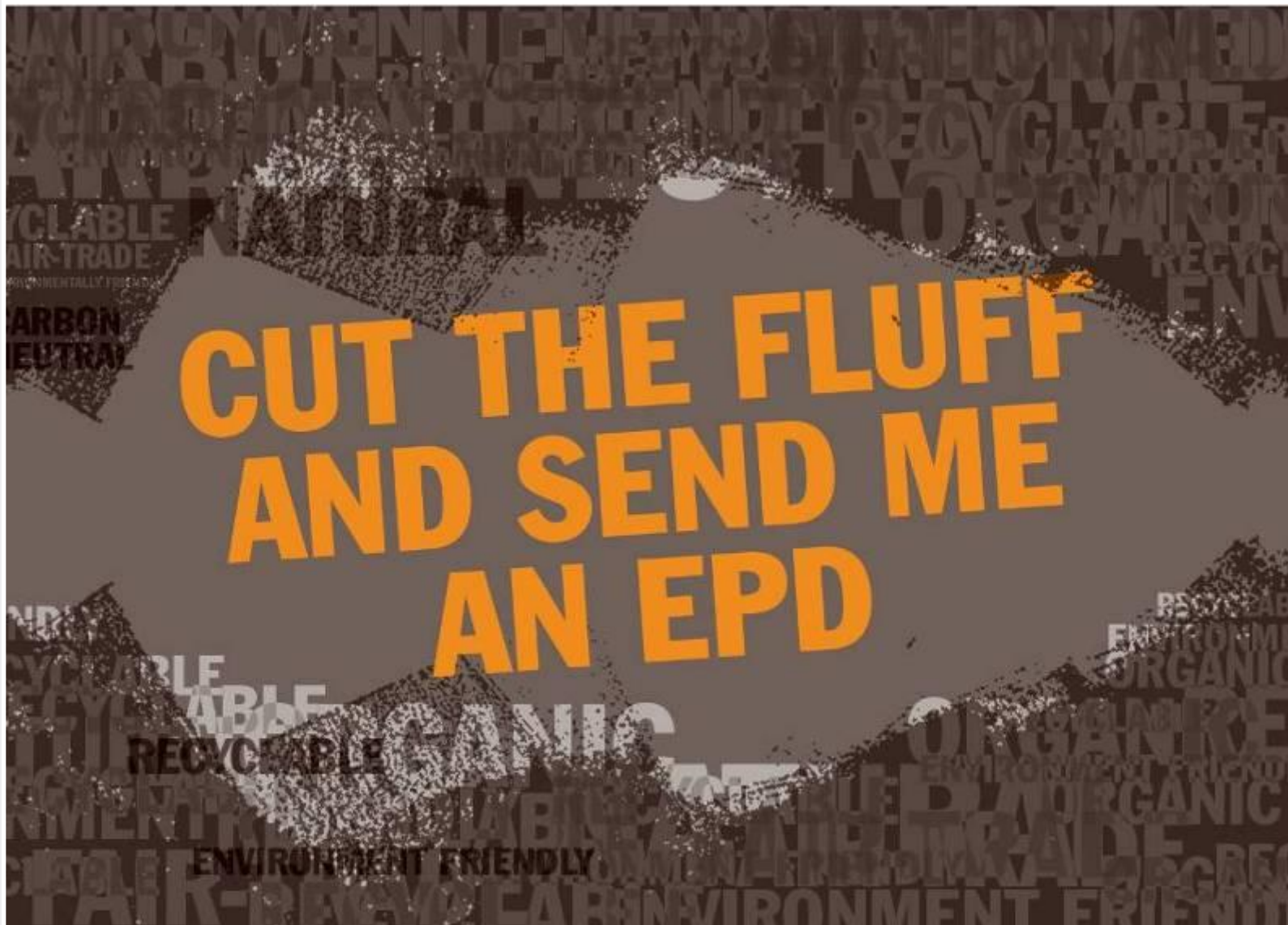


The 700 questions questionnaire

- Do you have an environmental policy?
- Do you sign to the precautionary principle?
- Have you signed to the Global Compact?
- Who is your ISO14001 auditor?

How transformative is this...?

Just one magic question to suppliers...



Interface FLOR



Mission Zero
our promise to eliminate
any negative impact our company
may have on the environment
by the year 2020

Today marketing is based on 100% somethings



Facts already successful in the car industry



- What is the biggest issue?
- Energy at use = gCO₂/km (becomes the magic metric)
- European-wide goals for the industry on gCO₂/km
- Mandatory displaying of the metric on advertising
- Company car tax: more tax if more gCO₂/km
- Road tax: more tax if more gCO₂/km
- City incentives: Low gCO₂/km have exemptions eg parking, congestion charge

Same story in the building industry?



- What is the biggest issue?
- Energy at use = gCO₂/m², gCO₂/occupant/year
- Embodied carbon of materials = gCO₂/unit(m², kg)
- European-wide goals for the industry
- Mandatory displaying of buildings efficiency ratings
- Stamp duty: more tax if less efficient
- Local council tax: more tax if less efficient
- Building rating tools: more points if less CO₂
- VAT exemptions for low embodied carbon materials

The 2 paradigm shift



OLD

- Corporate sustainability
- The Beauty contest
- Awards, labels, csr reports, certifications

UPCOMING

- Product sustainability
- Embedded
- LCA performance
- kg CO2 / m2

RADICAL

- Systems sustainability
- Radical system thinking
- Close loop systems, radical materials
- Services

Innovation.
Substituting
adhesives.
TacTiles



33m TacTiles sold in 2010.
Equal to cover 20% of
products sold globally

*Interface*FLOR

Modularity at the core of the system thinking











Please ban the landfill of carpet. We have the technology to recycle it.

*Interface***FLOR**

Ramon Arratia

Sustainability Director

InterfaceFLOR EMEAI

Mobile +44 77366 58399

ramon.arratia@interfaceflor.eu

www.interfaceflor.eu

BLOG <http://www.interfaceflorcutthefluff.com/>

<http://twitter.com/RamonArratia>

Download presentations @ www.slideshare.net/RamonArratia

*Interface***FLOR**